
To: All Wheelchair Rugby Participants

Date: 29 April 2012

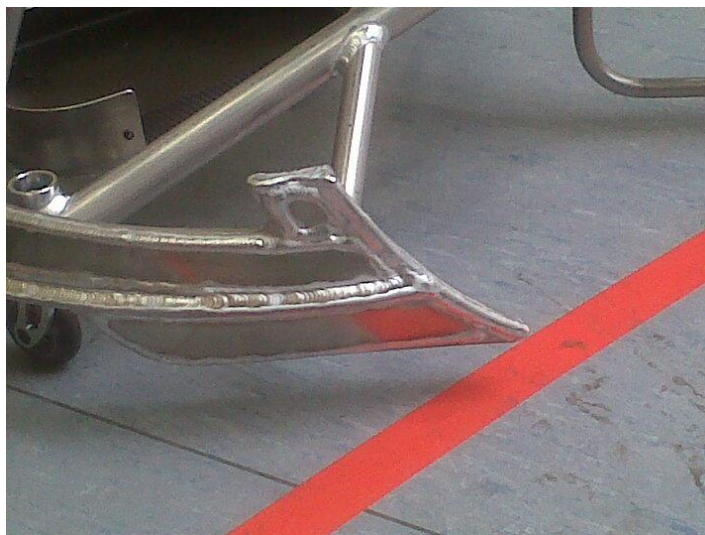
Topic: Modification to Wing

The Equipment Committee was asked to review the attached wing modification.

The Committee does not see anything illegal with this wing modification. However the wing will be checked when measured to ensure no sharp edges exist which may pose a danger to players. All other requirements of a legal wing must also be met.

This modification is approved by the Equipment Committee

This ruling is effective immediately.



Regards

Stan Battock

Stan Battock
IWRF Technical Commissioner
